



---

# **TOURING CAR**

---

## **championship**

### Touring Cars Help

[Copyright](#)  
[Technical Support](#)  
[Codemasters On The Web](#)

### 2D/3D Graphics Cards

[Overview / Problems](#)  
[Latest Drivers](#)  
[Web Sites](#)  
——— [Installing a new graphics driver](#)  
[Apocalypse 3Dx \(PowerVR\)](#)  
——— [S3 Chipset Cards \(General\)](#)  
——— [ATI Rage II](#)  
——— [Diamond Stealth 3D 2000](#)  
——— [2D Graphics Cards](#)

### Joystick Setup

[Overview](#)  
[How to install a Windows joystick driver](#)  
[How to set up your joystick\(s\) for Windows](#)  
[How to set up your joystick\(s\) for TOCA Touring Cars](#)  
[Using several joysticks](#)  
[Trouble Shooting](#)

### DirectX 5

[What is DirectX](#)  
[Troubleshooting](#)

### Sound

[Sound Problems ?](#)

The logo for TOCA, featuring the letters 'TOCA' in a stylized, outlined font. The 'O' is a circle with a horizontal line through it. A horizontal line extends to the right from the end of the 'A'.

# **TOURING CAR**

---

## ***championship***

### Copyright

©1997 The Codemasters Software Company Limited and Codemasters Limited. "Codemasters". All Rights reserved. BTCC. The British Touring Car Championship, TOCA and all its variations, copyrights, trademarks and images used or associated with the RAC British Touring Car Championship and/or depicting BTCC cars are all copyrights and/or registered trademarks of TOCA Limited and are being used under license by Codemasters. All other marks are trademarks of their respective owners.

[Back To Main Menu](#)



---

# **TOURING CAR**

---

## **championship**

### Codemasters Technical Support

If you have problems with TOCA Touring Cars technical support is available. Please contact us and we will do our best to help.

**Telephone** (UK) 01926 816044  
(9am to 5:30pm, GMT)  
**Fax** 01926 817595  
**Post** Technical Support  
Codemasters  
P.O. Box 6  
Leamington Spa  
Warks CV32 0DL  
England

**E-mail** [jayeshp@codemasters.com](mailto:jayeshp@codemasters.com)  
**WWW** <http://www.codemasters.com>

**Telephone** (France) 04 72 13 24 09  
(9am to 5:30pm, CET)  
**Fax** 04 72 1323 00  
**Post** Technical Support  
Codemasters  
47 rue Maurice Flandin  
69003 Lyon  
France

Please supply as much of the following information as possible:

#### **About your system**

- Make and model of your PC
- Processor type and speed
- Amount of memory
- Operating system
- Make and model of primary video
- Make and model of 3D Accelerator Card (If Installed)
- Make and model of sound card
- Hard-disk space free
- Any additional hardware attached (e.g. printers, tape streamers, dongles, scanners)

#### **About the problem**

- Description of the problem
- The events that led up to the problem

[Back To Main Menu](#)



---

# **TOURING CAR**

---

## ***championship***

### Codemasters On The Web

TOCA Touring cars has its own web site on the Internet. From here you will be able to view the TOCA Touring car hall of fame, view the fastest laps and download them as well. The address is :

<http://www.touringcar.com>

Alternatively the main Codemasters web site can be found at :

<http://www.codemasters.com>

In the Support section you can fill in a form describing the problem, which will be sent to us via e-mail. We will reply as soon as possible.

[Back To Main Menu](#)



# **TOURING CAR** **championship**

## 3D Graphics Cards Overview/Problems

TOCA Touring Cars works best when used in conjunction with a 3D Accelerator Hardware card. We have tested the game with all of the most popular graphics card to ensure compatibility.

To ensure the best performance from your 3D hardware accelerator card we recommend that you install the [Latest Drivers](#) for your card.

Some 3D cards may require special windows settings to be changed. These include :

- [Apocalypse 3Dx \(PowerVR\)](#)
- [S3 Chipset Cards \(General\)](#)
- [ATI Rage II](#)
- [Diamond Stealth 3D 2000](#)

If you are still experiencing problems with the display, we have provided several game configurations optimised for specific cards. The configuration may be changed from the Touring Car Launch menu under 3D Acceleration

[Back To Main Menu](#)



# TOURING CAR championship

## Latest 3D Graphics Card Drivers

**IMPORTANT ! IF YOU HAVE A 3D GRAPHICS CARD, YOU WILL NEED TO CHECK THAT YOU HAVE THE LATEST DRIVERS FOR IT.**

You can do this one of two ways:

- If you have Internet access, go to the web site for the manufacturer of your card (see the 'Web Links' section on the installation menu). If you go to the 'drivers' section of the site, you will be able to download and install the latest drivers for your card. Simply follow the instructions on the site.
- The latest drivers (as of 23rd October 1997) for most 3D cards are included on this CD in the 'drivers' directory. Find the appropriate directory for your card, using the table below, and follow the instructions in the 'readme.txt' file inside the directory.

Manufacturer	Graphics Card Name	Directory (On TOCA CD)
Creative Labs	3D Blaster PCI	drivers\blster3d
Creative Labs	3D Blaster VLB	drivers\blastv1b
Creative Labs	Graphics Blaster 3D	drivers\gblast3d
Diamond	Fire GL1000 Pro	drivers\firegl1p
Diamond	Monster 3D	drivers\monstr_3
Diamond	Stealth 3D 2000	drivers\sth2000
Diamond	Stealth 3D 2000 Pro	drivers\sth2000p
Diamond	Stealth 3D 3000	drivers\sth3000
Diamond	Viper V330	drivers\viper330
Hercules	Dynamite 3D VL	drivers\dynamite
Hercules	Stingray 128 3D	drivers\sting128
Jazz	Adrenaline Rush 3D	drivers\adrenrus
Jazz	G-Force 3Dx	drivers\gforc3dx
Matrox	Mystique/Millennium	drivers\matrox
Miro	miroCrystal VR4000	drivers\miro4000
Number Nine	9FX Reality 332	drivers\9fxr332
Number Nine	9FX Reality 772	drivers\9fxr772
Orchid	Righteous 3D	drivers\rgh3dfx
Sierra	Screamin' 3D	drivers\scream3d
S3	S3 Virge (Generic)	drivers\S3vir
S3	S3 Virge DX (Generic)	drivers\S3virdgx
S3	S3 Virge GX2 (Generic)	drivers\S3virgx2
S3	S3 Virge VX (Generic)	drivers\S3virvx
STB (S3)	Powergraph 64 3D	drivers\powerg64
STB (S3)	Nitro 3D	drivers\stbnitro
STB (S3)	Velocity 3D	drivers\veloc3d
STB (S3)	Velocity 128 3D	drivers\veloc128
Videologic	Apocalypse 3D	drivers\apoc_3d
Videologic	Apocalypse 3Dx	drivers\apoc_3dx

Videologic

Apocalypse 5D

drivers\apoc\_5d

If you are unsure about installing drivers, please see the section [Installing a new Graphics Driver](#).

**NOTE:** There are several different varieties of S3 Chipset. If You are unsure which one you have, try running the program S3ID.EXE located in \help of your Touring Car CD.

**PLEASE READ THE LICENCE AGREEMENT LOCATED IN THE RELEVANT DIRECTORY BEFORE INSTALLING ANY DRIVERS.**

[Back To Main Menu](#)





# **TOURING CAR** **championship**

## 3D Graphics Card Internet Sites

If you have a 3D graphics card, you will need to make sure you have the latest drivers for your card. You can do this by visiting the website of your graphics card manufacturer, and following the instructions in the 'drivers' section of the site.

Orchid	<a href="http://www.orchid.com">www.orchid.com</a>
Videologic	<a href="http://www.videologic.com">www.videologic.com</a>
ATI	<a href="http://www.atitech.ca">www.atitech.ca</a>
Diamond	<a href="http://www.diamondmm.com">www.diamondmm.com</a>
Matrox	<a href="http://www.matrox.com">www.matrox.com</a>
STB	<a href="http://www.stb.com">www.stb.com</a>
Number Nine	<a href="http://www.nine.com">www.nine.com</a>
Jazz	<a href="http://www.jazzmm.com">www.jazzmm.com</a>
Creative	<a href="http://www.creativelabs.com">www.creativelabs.com</a>
Hercules	<a href="http://www.hercules.com">www.hercules.com</a>
ELSA	<a href="http://www.elsa.de">www.elsa.de</a>
Intergraph	<a href="http://www.intergraph.com/ics/">www.intergraph.com/ics/</a>
Miro	<a href="http://www.miro.de">www.miro.de</a>
Genoa	<a href="http://www.genoasys.com">www.genoasys.com</a>
Techworks	<a href="http://www.techworks.com">www.techworks.com</a>
Canopus	<a href="http://www.canopuscorp.com">www.canopuscorp.com</a>
Deltron	<a href="http://www.deltrontech.com">www.deltrontech.com</a>
Sierra	<a href="http://www.sierra.com">www.sierra.com</a>
Jaton	<a href="http://www.jaton.com">www.jaton.com</a>
Leadtek	<a href="http://www.leadtek.com">www.leadtek.com</a>

If you are unsure about installing drivers, please see the section [Installing a new Graphics Driver](#).

[Back To Main Menu](#)



# **TOURING CAR** **championship**

## Joystick Overview

Unlike dedicated video game consoles, PC's do not have a standard type of joystick. Many different kinds of joystick are available for the PC, but they have different designs, numbers of buttons, and can be analogue or digital and can be connected in different ways. This has made it difficult for games programmers to write software which works correctly with all types of joystick.

Windows 95™ alleviates this problem by providing a standard method for games software to communicate with joystick hardware. This generally makes using joysticks with PCs much easier than before. Because so many different kinds of joysticks exist the user needs to set up their joysticks appropriately using Windows 95™. This help file will help you to set up your joysticks for maximum enjoyment of TOCA Touring Car Championship.

TOCA Touring Car Championship allows one to four joysticks to be used simultaneously. The keyboard can also be used. TOCA Touring Car Championship recognises Several types of joysticks, Including :

- 2 button pads (Joysticks with 2 or 3 buttons)
- 4 button pads (Joysticks with 4 or more buttons)
- Analog Devices (e.g. Steering Wheel, Pedals etc.)

To configure joysticks for use with TOCA Touring Cars, there are 3 main steps you must take :

- [Install the Windows 95™ joystick driver](#)
- [Configure your joystick\(s\), using the Windows control panel](#)
- [Configure the joystick buttons using the Configure Controls screen, from within the game.](#)

[Back To Main Menu](#)



# **TOURING CAR** ***championship***

## How to install a Windows joystick driver

Some joysticks do not need special drivers. These are generally the simple pads, which have only a few buttons or no special controls. The Windows joystick control panel knows about these, and if your joystick is one of these standard types, then you should be able to set up your joystick without trouble.

However, newer pads often have advanced features, which means that they require drivers to operate properly. The manufacturer should provide you with a Windows 95 driver when you purchase your joystick (Please refer to your joystick documentation for more details).

To install a joystick driver, you will require a disk, which should have been provided for you when you bought the joystick. Please follow the manufacturers instructions on how to install your joystick driver(s).

If you have further difficulty in installing your joystick driver, please contact the joystick manufacturer for help.

[Back To Main Menu](#)



---

# **TOURING CAR**

---

## **championship**

### How to set up your joystick(s) for Windows

Here is a step-by-step guide to get joysticks working with Windows and TOCA Touring Car Championship.

- Start the windows Joystick Properties dialogue box, to do this either :
  - Select the 'Joystick Panel' button from the Controller Setup screen within TOCA Touring Car Championship.
  - Switch to windows using ALT-TAB. Click the Start button, go to the Settings option and select Control Panel. Then double click on the joystick icon.
- Select the joystick number you wish to configure, by using the drop down list entitled 'Current joystick' Note that TOCA Touring Cars only recognises joysticks 1 to 4.
- Choose the type of your joystick from the drop down list entitled 'Joystick selection'. If your type of joystick is not here you can :
  - Install the correct driver (Please see [How to install a Windows joystick driver](#)).
  - Try one of the standard joystick types (e.g. 4-button gamepad)
- If the Calibrate button is selectable, press this now, and follow the on-screen instructions for calibrating your joystick.
- If the Calibrate or Test buttons are not selectable, Windows cannot recognise that particular joystick. Make sure that you actually have the correct joystick plugged in, for the driver you have selected. If you are sure that this is correct, then it is most likely that there is a problem with the joystick driver, such as a hardware conflict. Please refer to the Windows help file for more information on resolving hardware conflicts. Alternatively contact your joystick manufacturer for help.
- Finally test your joystick by pressing the 'Test' button, and ensuring that directional movement and buttons are correctly operating.
- If you wish to use several joysticks, this set-up process must be repeated for each joystick.
- [Now you must configure your joystick to work with TOCA Touring Cars.](#)

[Back To Main Menu](#)



---

# **TOURING CAR**

---

## ***championship***

### How to set up your joystick(s) for TOCA Touring Car Championship

This page is a guide to configuring your joysticks, so that they work with TOCA Touring Car Championship. If you have not yet configured your joystick to work under Windows, please see [How to set up your joystick\(s\) for Windows](#)

- Go to the game options menu
- Select the controller setup
- To choose the control method for player 1 select the button marked ' Player 1 Controls'. Now choose the control method by pressing the left or right cursor keys. Player 1 can use any available controller, so if there are 3 joysticks available, he might choose 'Joystick 3'.
- When you have done this you must choose which buttons (or keys) perform which actions. Simply follow the on-screen instructions.
- For each player you must repeat the steps. If you wish to play a 2 player game, controllers 1 and 2 must be set up. If you want 3 players, then set up controller 3, and for 4 players, you must set up controller 4.
- When your have configured all your joysticks, return back to the main menu. All settings are automatically saved, and are automatically loaded the next time you play TOCA Touring Car Championship.

[Back To Main Menu](#)

The logo for TOCA, featuring the letters 'TOCA' in a stylized, blue, outlined font.

---

# **TOURING CAR**

---

## ***championship***

### Using several joysticks

Unless you have a special adapter, you will normally only be able to use 2 joysticks simultaneously whilst playing TOCA Touring Car Championship. This is inherent in the design of the PC joystick port, and this limitation cannot be overcome without a special multi-port adapter.

For example, Gravis produces the excellent GriP multi-port system, which is ideal for use with TOCA Touring Car Championship.

If you configure the Windows control panel such that more than 2 joysticks are configured, without a multi-port adapter, then there may be unpredictable behaviour.

[Back To Main Menu](#)



---

# TOURING CAR

---

## championship

### Joystick Trouble Shooting

Here are some common problems with joysticks and Windows, and suggested solutions.

**Q. I do not have a joystick icon in my control panel. How can I get one?**

A. Perform the following steps :

- Open the control panel, and double click the 'Add New Hardware' icon.
- Click the button marked 'Next'
- When prompted if you want to search for new hardware, click 'No'.
- You will be presented with a new dialogue. Select the icon marked 'Sound, video and game controllers', and press 'Next'.
- Wait while Windows builds the driver information database.
- Find the manufacturer of your joystick, and select your joystick type. Follow the onscreen instructions from here.(You may need the disk supplied with your joystick)
- If your type of joystick is not present anywhere in the list, try and select the manufacturer as Microsoft, and select the model as 'Gameport joystick'. Follow the onscreen instructions from here. You may need your Windows 95 CD, in order to install a joystick.

**Q. My joystick is installed correctly, but it does not work with TOCA Touring Car Championship. What am I doing wrong?**

A. Check that your joystick is correctly calibrated in the Windows joystick control panel. (Use the 'test' option to check that everything is OK). If this is OK, then run TOCA Touring Car Championship, and go to Game Options->Controller SetupControl. Then choose your joystick in this screen, and configure the buttons. Your joystick should now work properly.

**Q. I have two 4-button joypads, but it appears only to use one. How can I solve this?**

A. If you have a standard PC gameport, then using two 4-button pads simultaneously is impossible. To use 2 joypads, they must be of the 2-button variety. By using a 4-button pad, some of the signals on the 2nd port are used, and that is why you cannot use two 4-button pads at the same time.

**Q. How can I use more than 2 joypads with TOCA Touring Car Championship?**

A. A standard PC only supports 2 joypads. You need to buy a special adapter, which allows you to plug in more than 2 joysticks. The Gravis GriP MultiPort™, is an example of such a device.

[Back To Main Menu](#)



# **TOURING CAR** **championship**

## What is DirectX?

DirectX is a Microsoft extension to Windows 32-bit operating systems, which enables games such as TOCA Touring Car Championship to utilise the hardware in modern PC's, to obtain maximum performance benefits. DirectX also removes many of the limitations of DOS. Fiddling with memory settings is a thing of the past with DirectX, and you do not need to specify tricky settings for your sound card : DirectX simplifies these troublesome areas.

DirectX is automatically installed on your PC when you install TOCA Touring Car Championship. If DirectX is not already installed on your PC, or you are currently using an earlier version, you may need to re-boot your machine after it has installed.

DirectX 5 is supplied with TOCA Touring Car Championship.

When installing DirectX 5 your display and sound drivers will be updated to provide DirectX compliant software with the ability to extract the maximum performance from your PC's hardware.

[Back To Main Menu](#)





# TOURING CAR championship

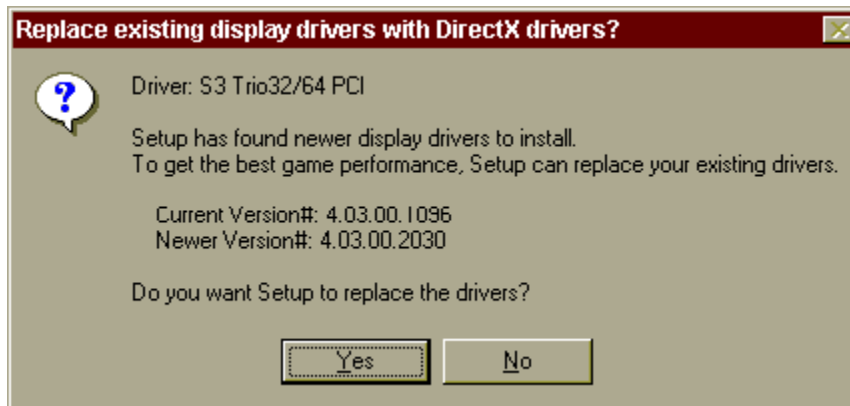
## DirectX Troubleshooting

Here are some commonly asked questions about DirectX.

### Q. Why must I reboot my machine when DirectX is installed?

A. DirectX enhances your display and sound drivers, but the changes cannot take effect whilst Windows is running. Windows therefore needs to be re-started, so that the new drivers can function properly.

### Q. When DirectX is installing, I get a window like this:



### Why does this happen, and what should I do?

A. Your display drivers are an extremely important part of your system, and this is simply a warning informing you that your current drivers will be updated with new DirectX drivers. If you get such a message, you should always reply 'Yes', or the Drivers will not be installed, and the game will not work. You can uninstall DirectX drivers if you have problems. (See next question).

### Q. How can I uninstall DirectX?

A. Go to the control panel, and open the 'Add/Remove Programs' application. You can remove DirectX from here.

### Q. What happens if I install DirectX 5 over my older version of DirectX?

A. Your DirectX drivers will be updated with the release 5 versions, but as long as your PC worked fine with the older versions, you should not have any problems.

### Q. What happens if I install DirectX 5 over a newer version of DirectX?

A. Microsoft plans to release updated versions of DirectX. Whenever you install a newer version, your old DirectX drivers will be updated. However, if you tried to install Touring Cars on your PC, with a higher version of DirectX, then the installer will realise that you have a newer version, and leave the latest version of DirectX untouched.

**Q. What can I do if my Video or Sound card is not supported by DirectX?**

A. You can try one of 3 things :

- Contact Microsoft and ask for new drivers
- Contact the manufacturer of the Video/Sound card, and ask for new drivers.
- Purchase a video or sound card, compatible with DirectX/Windows 95, for which drivers are available.

Additionally Codemasters will endeavour to obtain the latest drivers from Microsoft & video and sound card manufacturers. Contact Codemasters technical support for details.

**Q. How much space does DirectX use on my hard-drive?**

A. About 10Mb.

**Q. Does DirectX work on Windows NT?**

A. No, although Microsoft are working on this, and DirectX for NT will be along soon.

**Q. When I install DirectX I get a warning that a driver has been written over by an older version. Why is this?**

A. This is just Windows warning you that a driver has been changed. Don't worry about this.

[Back To Main Menu](#)

The logo for TOCA, featuring the letters 'TOCA' in a stylized, blue, outlined font.

---

# **TOURING CAR**

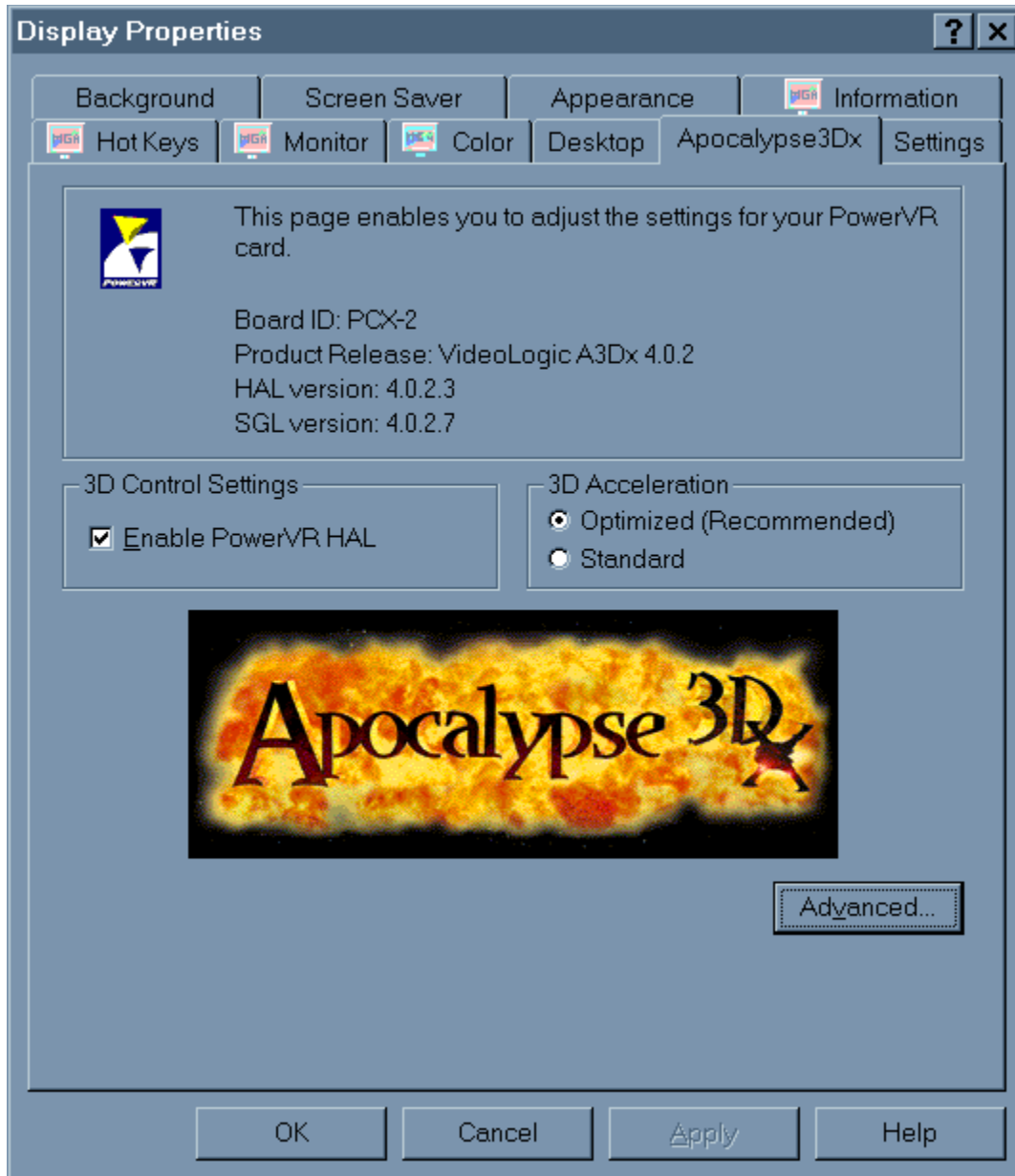
---

## ***championship***

### Settings Information For Apocalypse 3Dx

When running TOCA Touring Car Championship with the Apocalypse 3Dx graphics accelerator card it is advisable to use particular hardware acceleration settings to gain the optimum performance from the game. Proceed with the following steps:

1. Choose "Settings" from the "Start" menu and select "Control Panel".
2. Double click on the "Display" icon.
3. Select the "Apocalypse3Dx" tab.
4. Ensure that "Enable PowerVR HAL" is checked and that "3D Acceleration" is set to "Optimized".

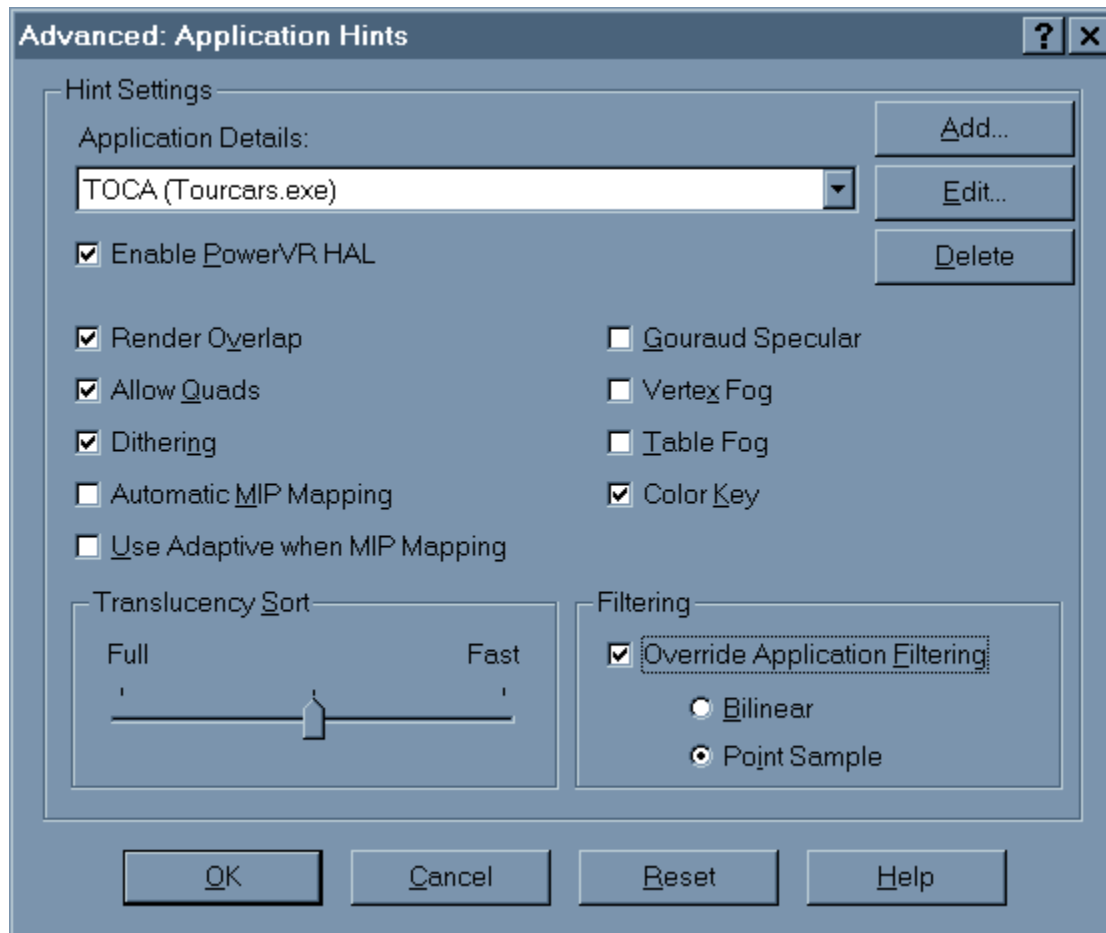


5. Press the "Advanced..." button.
6. You will need to add Tourcars.exe to the list of controlled applications. To do this, press "Add" and then "Browse" to locate the game executable (by default this is in C:\Codemast\Tourcar but will be elsewhere if you have installed the game in a different place). Enter the application description as "TOCA" and press "OK".
7. Now select "TOCA" from the list under "Application Details".
8. Ensure that the following options are checked:
  - "Render Overlap"
  - "Allow Quads"
  - "Color Key"and the following are not checked:

"Dithering"  
"Automatic MIP Mapping"  
"Use Adaptive when MIP Mapping"  
"Gouraud Specular"  
"Vertex Fog"  
"Table Fog"

9. Set the Translucency Sort slider to half way between "Full" and "Fast".

10. Check "Override Application Filtering" and choose "Point Sample".



11. Press "OK".

[Back To Main Menu](#)



# **TOURING CAR** *championship*

## Settings Information For Cards Using S3 Chipset

Before running TOCA Touring Car Championship the 3D Acceleration parameter located within the game's launch menu should be set to "S3 Chipset".

Possible sound or graphic problems may arise when using an S3 card with very fast machines (i.e. P233 and over). We have tested this extensively and believe it to be a driver problem. Please see the section [S3 Problems](#) for more details.

[Back To Main Menu](#)

The logo for TOCA, featuring the letters 'TOCA' in a stylized, blue, outlined font. The 'O' is a circle with a horizontal line through it. A horizontal line extends to the right from the end of the 'A'.

# **TOURING CAR** *championship*

## Settings Information For ATI Rage II Cards

Before running TOCA Touring Car Championship the 3D Acceleration parameter located within the game's launch menu should be set to "ATI Rage II".

If this parameter is not set you may experience some strange graphical effects.

[Back To Main Menu](#)

The logo for TOCA, featuring the letters 'TOCA' in a stylized, outlined font.

---

# **TOURING CAR**

---

## ***championship***

### Information About The Diamond Stealth 3D 2000

If you are experiencing any sound or graphical problems we recommend that you install the S3 generic drivers (As the *Stealth 3D 2000* is based on the *S3 chipset*). For more information about this see the section [S3 Problems](#).

[Back To Main Menu](#)





# TOURING CAR championship

## S3 Problems

Possible sound or graphic problems may arise when using an S3 card with very fast machines (i.e. P233 and over). We have tested this extensively and believe it to be a driver problem.

We have found that the latest S3 Virge generic drivers seem to remedy this. These drivers can be found in the \DRIVERS directory of your Touring Cars CD. You will however need to know what type of S3 chipset your card has. Below is a list of known S3 Cards :

Card Name	S3 Graphics Chip	Location (On TOCA CD)
Diamond Stealth 3D 2000	S3 Virge	drivers\S3vir
ELSA Victory 3D	S3 Virge	drivers\S3vir
Genoa Phantom 3D	S3 Virge	drivers\S3vir
Hercules Terminator 3D	S3 Virge	drivers\S3vir
Jazz G-Force 3D	S3 Virge	drivers\S3vir
Leadtek WinFast 3D S600	S3 Virge	drivers\S3vir
MiroMEDIA 3D	S3 Virge	drivers\S3vir
Number Nine 9FX Reality 332	S3 Virge	drivers\S3vir
Orchid Fahrenheit Video 3D	S3 Virge	drivers\S3vir
STB Powergraph 64 3D	S3 Virge	drivers\S3vir
Videologic GrafixStar 450	S3 Virge	drivers\S3vir
Diamond Stealth 3D 2000 Pro	S3 Virge DX	drivers\S3virdgx
ELSA Victory 3DX	S3 Virge DX	drivers\S3virdgx
Genoa Phantom 3D DX	S3 Virge DX	drivers\S3virdgx
Jazz G-Force 3DX	S3 Virge DX	drivers\S3virdgx
Leadtek WinFast 3D S600DX	S3 Virge DX	drivers\S3virdgx
STB Nitro 3D	S3 Virge GX	drivers\S3virdgx
Number Nine 9FX Reality 334	S3 Virge GX2	drivers\S3virgx2
Diamond Stealth 3D 3000	S3 Virge VX	drivers\S3virvx
ELSA Winner 2000 AVI 3D	S3 Virge VX	drivers\S3virvx
ELSA Winner 3000	S3 Virge VX	drivers\S3virvx
Leadtek WinFast 3D S1000	S3 Virge VX	drivers\S3virvx
miroCRYSTAL VR4000	S3 Virge VX	drivers\S3virvx
Number Nine 9FX Reality 772	S3 Virge VX	drivers\S3virvx
STB Velocity 3D	S3 Virge VX	drivers\S3virvx
Videologic Grafixstar 750	S3 Virge VX	drivers\S3virvx

If you are unsure which one you have, try running the program S3ID.EXE located in the \HELP directory of your Touring Car CD. Codemasters cannot accept responsibility for any problems that may occur when installing new or incorrect drivers.

These are generic S3 drivers for the ViRGE family of video cards. If you encounter problems with these drivers while running your application, you should check with your board manufacturer for their latest drivers, or get the latest drivers from the S3 web site at [www.s3.com](http://www.s3.com).

[Back To Main Menu](#)





# **TOURING CAR** **championship**

## Installing a new graphics driver

1. Download the relevant zip file onto your PC
2. Unzip it using PKUnzip or Winzip.

You will now need to do one of the following. Either or both may work. If you are installing a driver from the Touring Cars CD they can be found in the **DRIVERS** directory

3. Find your 3D card in the System section of the Windows 95 Control Panel. It will probably be under display adapters, multimedia or 'sound, video and game controllers'. Double click on the card, and go to the drivers section. Click on 'update driver'. Let Windows 95 search for the new driver, and then point it to the directory in which you unzipped the driver. Click OK, and the driver will install.

or

4. Find your 3D card in the System section of the Windows 95 Control Panel. It will probably be under display adapters, multimedia or 'sound, video and game controllers'. Click on the card and click remove. Then you can go to 'add new hardware' in the Control Panel, choose to search for the new hardware yourself, choose Display Adapters, and then 'have disk'. Point it to the directory in which you unzipped the driver. Click OK, and the driver will install.

Codemasters cannot accept responsibility for any problems that may occur when installing new or incorrect drivers.

[Back To Main Menu](#)



# **TOURING CAR** **championship**

## 2D Display Driver Problems

### **Game runs very slowly? Only the HIGH resolution option is available?**

If you are using a PC without 3D hardware acceleration we would advise that you play the game using the LOW resolution setting in the game. This is because the PC will not be able to display a HIGH resolution image often enough for the game motion to be fluid. Some graphics cards software drivers do not allow DirectX applications, such as this, to use resolutions lower than 640 by 480 pixels. To enable the games LOW resolution option you must be using a display driver that supports 320 by 240 pixels in 16 bit colour.

Many non 3D graphics cards use a chip-set manufactured by S3. If you have one of these cards and you are having this problem we recommend that you try using the display drivers supplied by S3 themselves from [www.s3.com](http://www.s3.com), rather than the card manufacturer for your card. These drivers support all screen resolutions and should allow you the choice of LOW, MEDIUM and HIGH resolution options in the game.

To find out whether you have an S3 chip-set, and which type it is, run the program S3ID.EXE located in the **help** directory of your Touring Car CD. If you have access to the Internet you then can download the appropriate driver by going to the S3 web-site at [www.s3.com](http://www.s3.com) and choosing the "drivers and utilities" option.

[Back To Main Menu](#)

